



Elphinstone Mills + Jupiter Mills

Mumbai, India

ADRIAN SMITH + GORDON GILL
ARCHITECTURE

Elphinstone Mills + Jupiter Mills

Mumbai, India

Elphinstone Mills, a 60-story mixed-use complex and Jupiter Mills, a 75-story luxury residential tower are located in the heart of Mumbai, India.

SERVICES
Architecture

The Elphinstone Mills complex includes Class A office space and a pedestrian friendly retail podium. The building is designed to a LEED Platinum standard and will create a new icon in the skyline of Mumbai.

CLIENT
Indiabulls Real Estate Ltd.

Every floor of the office tower features outdoor terraces and multi-story garden atria, fully integrating the interior workspace with natural elements of the exterior environment. These garden spaces provide tenants with a shaded area for relaxation and socialization. While these outdoor spaces provide abundant natural daylight, the building is oriented to minimize solar gain decreasing the heating effect of direct sunlight and increasing comfort levels for building tenants.

FUNCTION
Mixed-use

FACTS
60 stories
75 stories

Each atrium space is connected to a central atrium within the building's core. Air flows from the exterior environment into this central chimney space, accelerating as it travels down the atrium toward a series of wind turbines, which generate power for the building.

Residential tower Jupiter Mills maximizes views with 50 stories of residential condominiums from floors 25-75. The building was designed to a LEED Platinum standard.







GROUND LEVEL



LEVEL 1

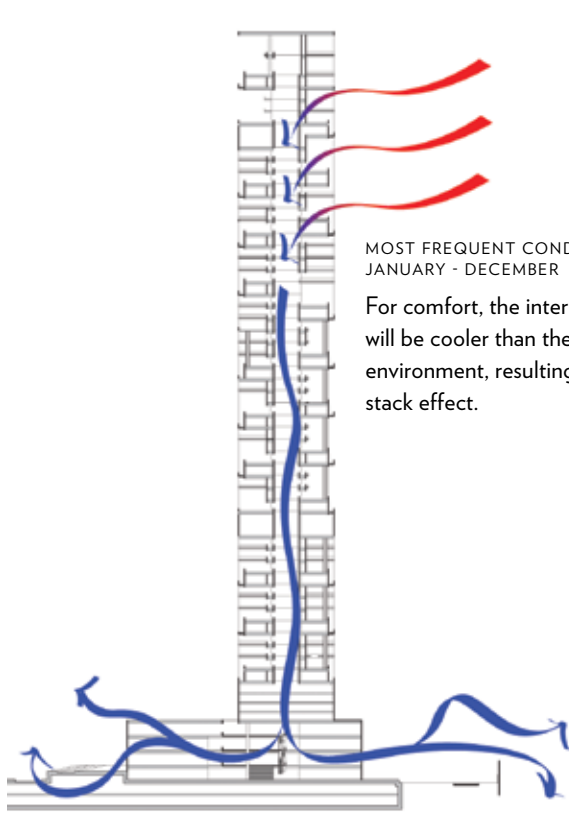


LEVEL 2



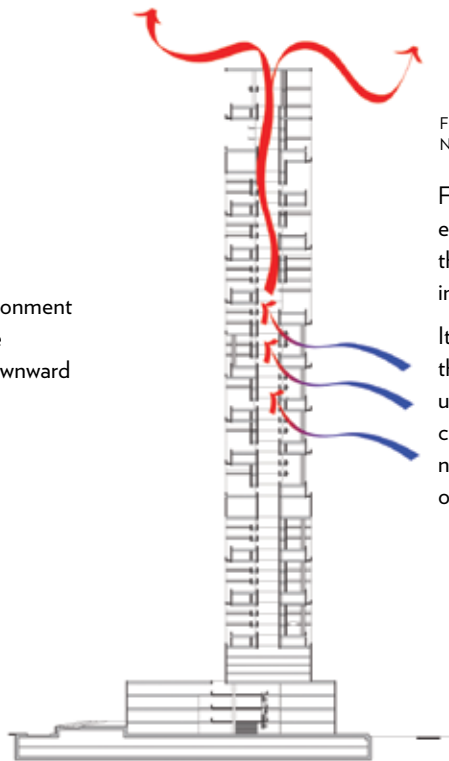
LEVEL 3





MOST FREQUENT CONDITION
JANUARY - DECEMBER

For comfort, the interior environment will be cooler than the outside environment, resulting in a downward stack effect.



FRINGE CONDITION
NOVEMBER - MARCH

For comfort, the interior environment will be warmer than the outside environment, resulting in an upward stack effect.

It is possible that a flip-flop from the downward condition to the upward condition could occur on cooler days or between day and night when temperatures drop to or below 20 C.

NATURAL VENTILATION

Air flow from the terraces and balconies facilitates natural ventilation through the building via the atrium.

