



Meraas Tower

Dubai, United Arab Emirates

ADRIAN SMITH + GORDON GILL
ARCHITECTURE

Meraas Tower

Dubai, United Arab Emirates

The Meraas Tower combines simple geometric principles with new and emerging technologies to create a modern, soaring “tower of light” for the city of Dubai.

SERVICES

Architecture

CLIENT

Meraas Properties

FUNCTION

Mixed-use

FACTS

500 m height

300,000 sm building area

Like a prism, the 112-story tower has a series of faceted surfaces that increase light and air traveling through the building. The faceted shapes maximize energy generation, balance natural light and offer 360-degree views. They also create natural atrium spaces as the building ascends, allowing for the creation of naturally lit sky gardens that activate the tower’s form.

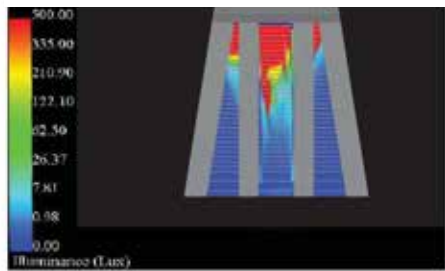
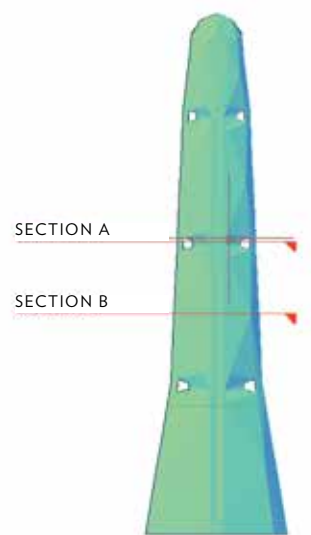
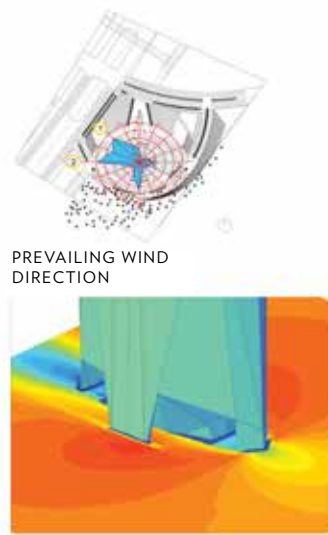
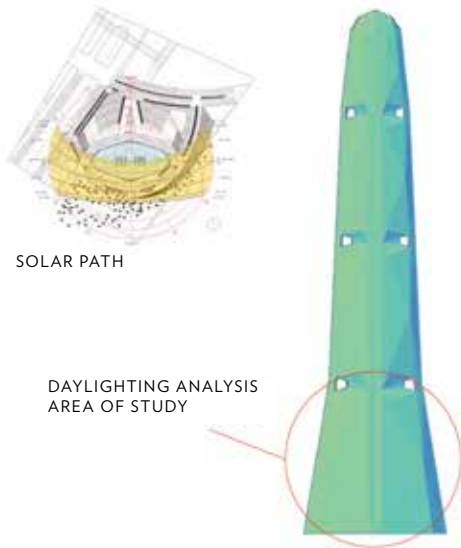
Exposing the intermediate floors gives the illusion that the structure is composed of four smaller towers stacked on top of one another, creating a “vertical city.”

Meraas Tower includes 300,000 sm of hotel, convention, commercial and retail spaces. The 15-story hotel features a ballroom, prefunction facilities and soaring lobby atrium topped by an elegant, lushly landscaped sky lobby.

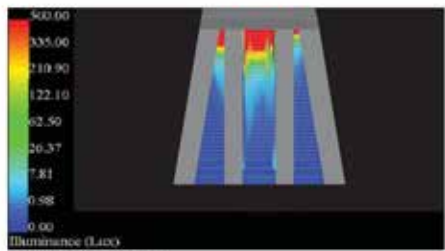
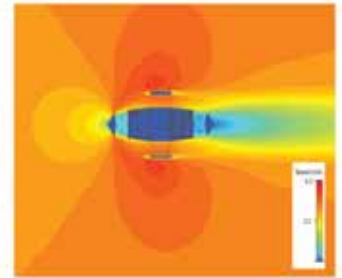
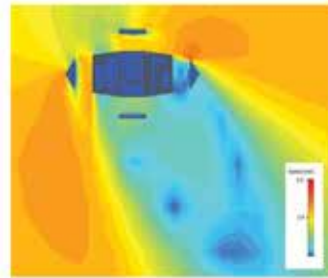


ADRIAN SMITH+ GORDON GILL
ARCHITECTURE

MERAAS TOWER

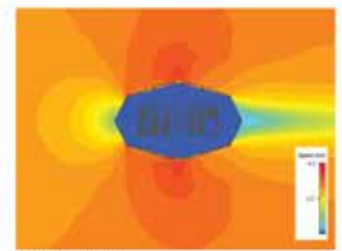
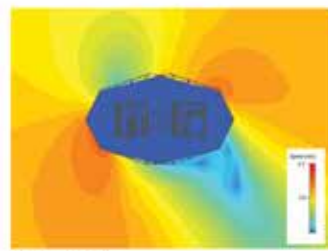


SPRING (MARCH 21, 2009 @ NOON)
AVERAGE ILLUMINANCE WITHIN ATRIA: 94 LUX

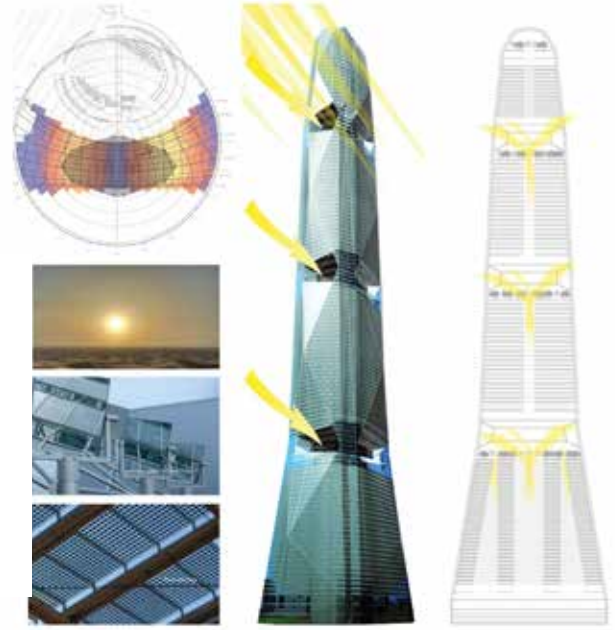
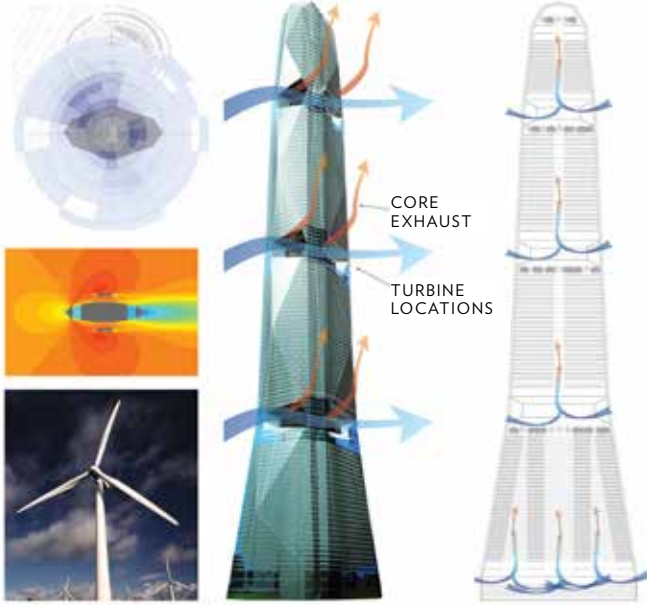


SUMMER (JUNE 21, 2009 @ NOON)
AVERAGE ILLUMINANCE WITHIN ATRIA: 35 LUX

ATRIUM DAYLIGHT

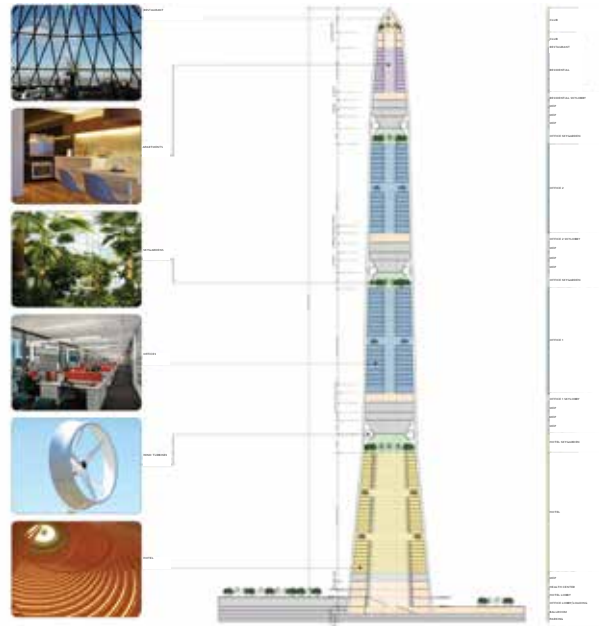


WIND ENERGY



SKYGARDEN LOCATIONS

SKYGARDEN AND VEGETATED ATRIUM







ADRIAN SMITH+GORDON GILL
ARCHITECTURE

MERAAS TOWER